

Installation Instructions

TouchBoard Mobile Table Easel V3 – TBMS-MOB-TE

Warning

Severe personal injury, possible death and property damage can result from improper installation or assembly. Read the following warning carefully before commencing installation:

- This product must only be installed by a qualified audio visual installer or suitably licensed tradesman.
- If you do not understand the instructions or have any concerns or questions please stop installation immediately and contact TouchBoard or your local supplier.
- Do not continue with installation if hardware is damaged or missing. If hardware is damaged or missing please contact TouchBoard or your local supplier.
- Only use this product for its designed purpose and within stated manufacture specifications.
- The manufacturer disclaims any liability for the modification, improper installation or use of product outside its weight range. The manufacturer will not be liable for any death, injury or damages arising out of the use, or inability to use this product.

Caution

As this system is electrically height adjustable, at no time should items be placed or stored in a position under the Touch Screen and floor. If items are placed under the Touch Screen they may be crushed or damaged during electrically lowering the system which will result in damage to items, damage to equipment and possible injury to personnel.

Specifications for TBMS-MOB-TE

For TV Panels: 55" – 75"

Max Load: 79kg

Supported VESA Sizes:

400x400mm – 600x400mm



Table of Contents

1. Parts List
2. Step 1 – Installing the Column Caps to Screen Mounting Frame
3. Step 2 – Installing the Column Caps to Lower Actuator Bracket
4. Step 3 – Installing the Lifting Columns to Column Cap Assembly
5. Step 4 – Installing the Lifting Columns to Mobile Base
6. Step 5 – Installing the Control and Power Board and Cable Clips to Screen Mounting Frame
7. Step 6 – Installing the Tilt Actuator
8. Step 7 – Installing the Cables
9. Step 8 – Installing the Column Caps Covers and Handles
10. Step 9 – Quality Assurance and Testing

Packing List

Box 1/3 TBMS-MOB-TE Frame

800mm x 500mm x 150mm Weight 28kg

Box 2/3 TBMS-MOB-TE Box Base

1240mm x 780mm x 90mm Weight 24kg

Box 3/3 TBMS-MOB-TE Box Actuator

760mm x 330mm x 120mm Weight 16kg

Parts List

Screen Mounting Frame and Lower
Actuator Bracket



Left and Right Column Caps and Covers



Mobile Base



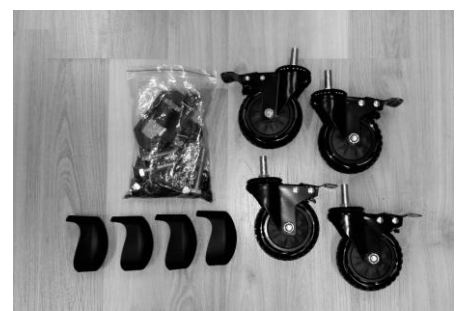
Left and Right Lifting Columns



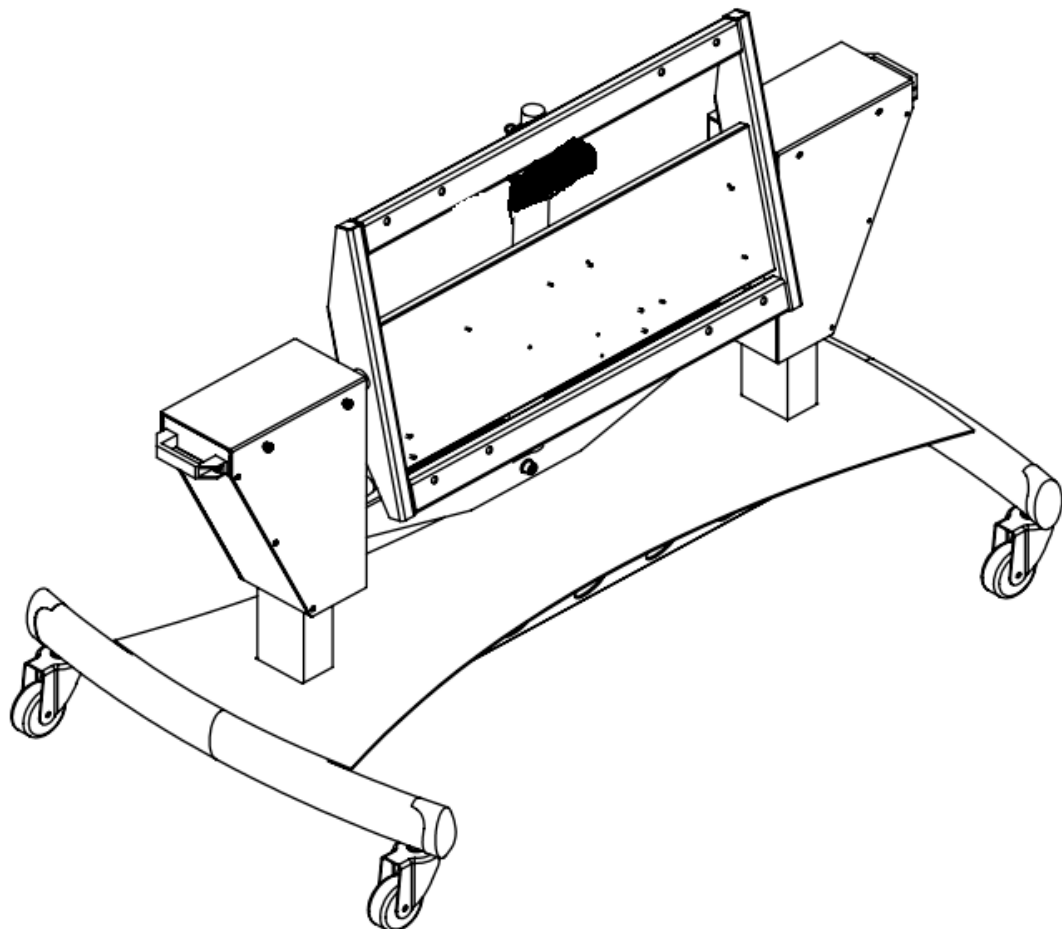
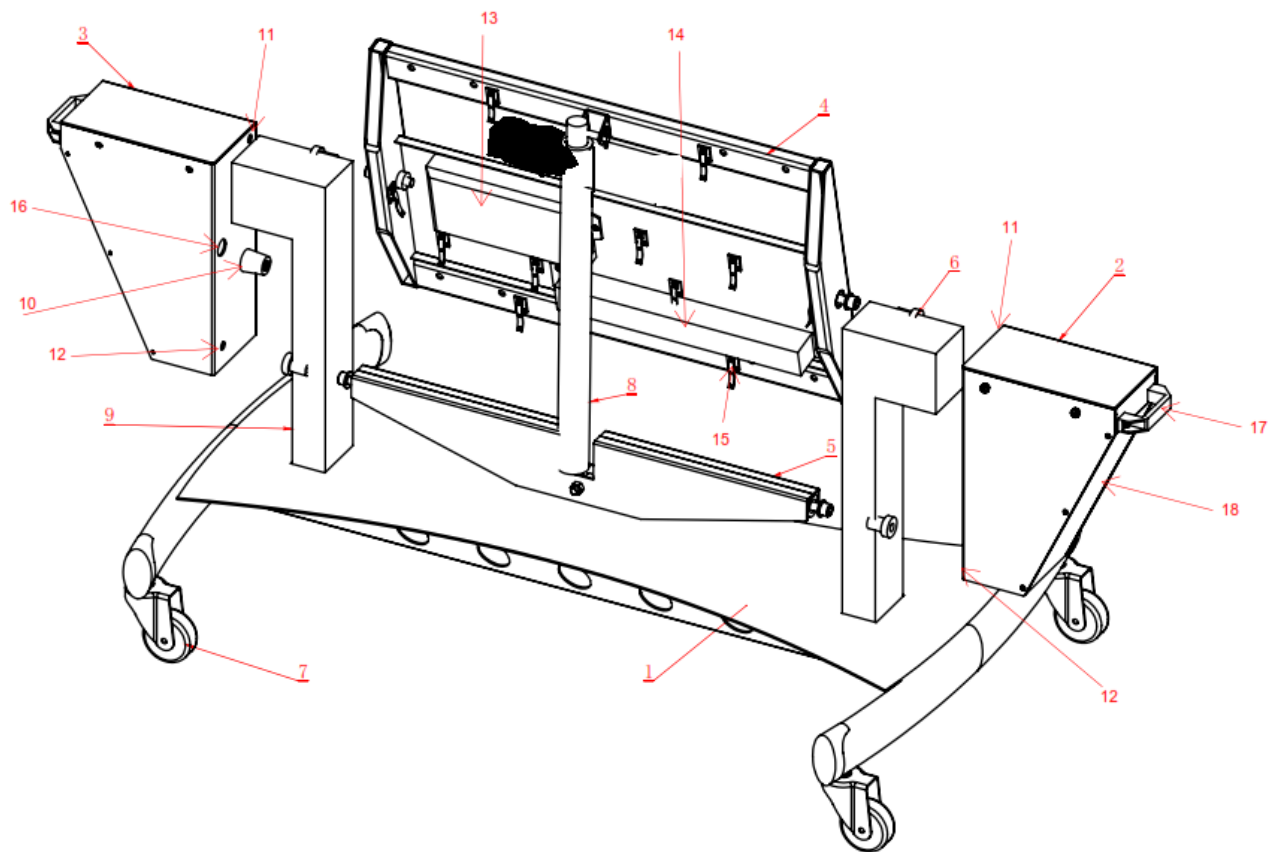
Tilt Actuator, Controller, Up Down
Switch, Power Board



Consumables



TOUCHBOARD MOUNTING SYSTEMS





Step 1 – Installing the Column Caps to Screen Mounting Frame

- Install Rubber Bump Stop (10) to Left and Right Hand Column Caps (3) (2) using 2 x M8 x 40mm Hexagon socket countersunk head screw.
- Install Screen Mounting Frame (4) to Left and Right Column Caps (3) (2) using 2 x M12 x 60mm Hexagon socket head screw and 2 x M12 Washers through Hole (11).

Step 2 – Installing the Column Caps to Lower Actuator Bracket

- Install Lower Actuator Bracket (5) to Left and Right Column Caps (3) (2) using 2 x M12 x 60mm Hexagon socket head screw and 2 x M12 Washers through Hole (12).

Step 3 – Installing the Lifting Columns to Column Cap Assembly

- Install the Left and Right Lifting Columns (6) (9) into the Column Cap Assembly (2) (3) using 4 x M6 x 20mm and 4 x M6 x 45mm Hexagon socket pan head screw and 8 x Washers.

Step 4 – Installing the Lifting Columns to Mobile Base

- Install the 4 x Castors (7) into Mobile Base (1)
- Install the 4 x Plastic Caps into the Mobile Base (1)
- Lift the assembled Lifting Columns (6) (9) into the Mobile Base (1) using 8 x M6 x 20mm Hexagon socket pan head screw and 8 x M6 Washers.

Please note the correct orientation of the front and back of the Mobile Base (1).

Step 5 – Installing the Controller and Power Board and Cable Clips to Screen Mounting Frame

- Install the Controller (13) to the Screen Mounting Frame (4) using 2 x M4 x 12mm Hexagon socket pan head screw and 2 x M4 Washers.
Please note the correct orientation of the Controller is with the power lead towards the outside of the Screen Mounting Frame and the M1-M3 connectors towards the centre of the Screen Mounting Frame.
- Install the Power Board (14) to the Screen Mounting Frame (4) using 4 x M4 x 12mm Hexagon socket pan head screw and 4 x M4 Washers.
- Please note the correct orientation of the Power Board is with the power lead towards the Centre of the Screen Mounting Frame.

Step 6 – Installing the Tilt Actuator

- Install the Tilt Actuator (8) into the Lower Actuator Bracket (5) using 1 x M10 x 40mm Hexagon socket pan head screw and 1 x M10 Washer.
Please note the correct orientation of the Tilt Actuator (8).
- Install the Tilt Actuator (8) into the Screen Mounting Frame (4) using 1 x M10 x 40mm Hexagon socket pan head screw and 1 x M10 Washer and 1 x M10 Locking Nut.

Step 7 – Installing the Cables and Cable Clips

- Install the 2 x Extension Cables into the Left and Right Lifting Columns (6) and through the Hole (16) on the Left and Right Hand Column Caps (3) (2).
- Install the 12 x Cable Clips (15) using 12 x M3 x 12mm Hexagon socket countersunk head screw.
- Install cables from the Left and Right Lifting Columns (6) and Tilt Actuator (8) and Up Down Switch into the Controller (13) as per connections below.

Control Box Configuration

M1 – Left Hand Lifting Column

M2 – Right Hand Lifting Column

M3 – Tilt Actuator

HS – Up Down Switch

- Install and secure all cables using the 12 x Cable Clips (15).

Step 8 – Installing the Column Caps Covers and Handles

- Install 2 x Handle (17) to Column Cap Cover (18) using 2 x M6 x 20mm Hexagon socket head screw and 2 x M6 Washers.



- Install Left and Right Column Cap Cover (18) to Left and Right Hand Column Caps (3) (2) using 12 x M3 x 12mm Hexagon socket pan head screw and 12 x M3 Washers.

Step 9 – Quality Assurance and Testing

- Thoroughly inspect the system for correct installation, ensuring all parts are correctly tightened and secure.
- Raise lower and Tilt the system to the highest and then lowest position. Check that all cables are secure and correctly installed and that there is no binding or rubbing of cables/correct installation to the wall, ensuring that the system is safely and securely fastened.

Additional Technical Support

If additional help and technical support is required during installation, please contact TouchBoard on 1300 667 084 or contact your local supplier.